

WIRING HARNESSES



Model 801-4, 801-6, 801-8 10 Pin Harness **Loop Detectors and AVI Receivers**



Connector: MS-3106A-18-1S (10 pin)
Length: 801-4 (4 feet) 801-6 (6 feet) 801-8 (8 feet)
Wire Size: #22 AWG
Wire Type: MIL-W-16878/17 Type B/N
Jacket: PVC (gray)
Termination: None
Twisted Wires: Pins D & E (Red & Orange) - loop wires

Pin	Wire Color	Pin	Wire Color
A	White	F	Yellow
B	Brown	G	Blue
C	Black	H	Green
D	Red	I	Violet
E	Orange	J	Gray

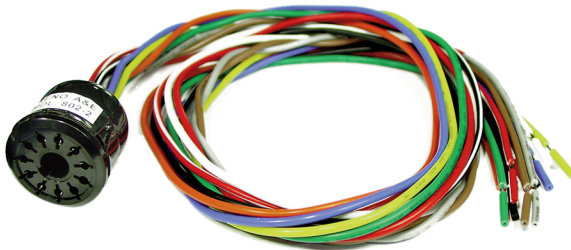
Model 801SW-4, 801SW-6, 801SW-8 10 Pin Harness **TS 2 Cabinet Power Supply**



Connector: MS-3106A-18-1SW (10 pin), key is rotated to SW position
Length: 801SW-4 (4 feet) 801SW-6 (6 feet) 801SW-8 (8 feet)
Wire Size: See table below
Wire Insulation: Cross-link Polyethylene (XLPE), 0.020" thick
Jacket: PVC (brown)
Termination: None

Pin	Wire Color & Size	Pin	Wire Color & Size
A	White #22 AWG	F	N.C.
B	Brown #22 AWG	G	Gray #16 AWG
C	Black #22 AWG	H	Green #22 AWG
D	Red #16 AWG	I	Yellow #22 AWG
E	Orange #16 AWG	J	Blue #22 AWG

Model 802-2 11 Pin Harness **Loop Detectors**



Connector: Similar to Amphenol 78-S11 (11 pin)
Length: 2 feet
Wire Size: #20 AWG
Wire Type: PVC 105°C / 600V
Termination: None

Pin	Wire Color	Pin	Wire Color
1	Black	7	Gray
2	White	8	Brown
3	Orange	9	Red
4	Green	10	Black/White
5	Yellow	11	Red/White
6	Blue		



Reno A&E

Transportation Control Products

4655 Aircenter Circle • Reno, Nevada • 89502 • USA

Tel: (775) 826-2020 • Fax: (775) 826-9191

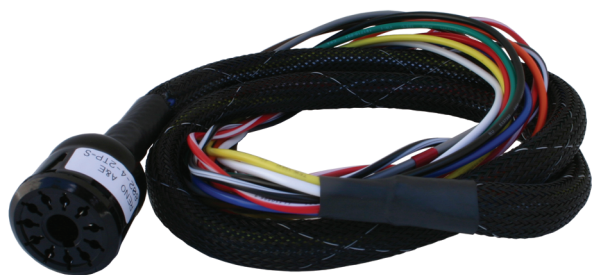
E-mail: sales@renoae.com • Website: www.renoae.com



Since 2000

WIRING HARNESS SPECIFICATIONS (CONT.)

Model 802-4 11 Pin Harness Loop Detectors



Connector: Similar to Amphenol 78-S11 (11 pin)
Length: 4 feet
Wire Size: #20 AWG
Wire Type: PVC 105°C / 600V
Jacket: Nylon mesh (30 inches long)
Termination: None
Twisted Pairs: Pins 7 & 8 (Gray & Brown)
Pins 10 & 11 (Black/White & Red/White)

Pin	Wire Color	Pin	Wire Color
1	Black	7	Gray
2	White	8	Brown
3	Orange	9	Red
4	Green	10	Black/White
5	Yellow	11	Red/White
6	Blue		

Model 804-4, 804-8 19 Pin Harness Loop Detectors



Connector: MS-3106A-22-14S (19 pin)
Length: 804-4 (4 feet) 804-8 (8 feet)
Wire Size: #22 AWG
Wire Type: MIL-W-16878/1 Type B/N
Jacket: PVC (black)
Termination: None
Twisted Pairs: Pins D & E (Brown & White/Brown)
Pins F & G (Red & White/Red)
Pins J & K (Orange & White/Orange)
Pins L & M (Yellow & White/Yellow)

Pin	Wire Color	Pin	Wire Color
A	White	L	Yellow
B	Gray/Black	M	White/Yellow
C	Black	N	White/Blue
D	Brown	P	Blue
E	White/Brown	R	Violet
F	Red	S	White/Violet
G	White/Red	T	Gray
H	Green	U	White/Gray
J	Orange	V	White/Black
K	White/Orange		

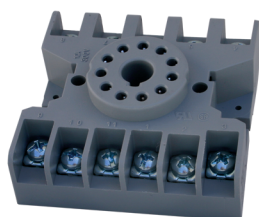
Model 415-2104-10 4 Pin Harness (Phase Green Interface) Use with Model U Series Detectors



Connector: Amp 206060-1 (4 pin)
Length: 10 feet
Wire Type: UL 1015
Wire Size: #18 AWG
Termination: None

Pin	Wire Color	Function
1	Brown	Channel 1 Green Input
2	Red	Channel 2 Green Input
3	Orange	Channel 3 Green Input
4	Yellow	Channel 4 Green Input

Model SKT-11 Socket Base Loop Detectors



Female, relay type socket base (11 pin)
Screw mount (not DIN rail mountable)
Termination: Screw terminals